



## LAPSED LICENCE 'REGISTRATION'

The Automotive Solutions Group has experienced a greater number of enquiries lately from clients who are no longer able to re-licence their vehicle due to lapsed licensing and cancelled plates. This is generally due to the effects of the Covid-19 pandemic. Vehicles may not have been used since the first lockdown from late-March 2020, perhaps due to redundancy and, in some cases, vehicle owners having left the country.

We've put together a guide on how this issue arises, what to do if it has - and how to avoid the potential expense.

## Thank you for SUPPORTING LOCAL

Automotive Solutions is a leading network of local independent professional automotive repair centres throughout New Zealand, all dedicated to excellent standards of workmanship and service.

It began in the late nineties when a small group of automotive repair centres wanted to ensure that their businesses would remain relative now and in the future.

This not so small group now has 60 members throughout New Zealand from Northland to Invercargill, and everywhere in between.

Our cornerstones of independence and networking have benefitted our repair centres and their customers. With regular meetings throughout the year, we share best practice in the running of our businesses as well as servicing and repair of our customers vehicles.

Call 0800 791 791 or visit our website [automotivesolutions.co.nz](http://automotivesolutions.co.nz) to find a trusted Automotive Solutions repairer near you.

### REGISTRATION VERSUS LICENSING

In order to drive a vehicle on the road in New Zealand, it must first be registered and then remain licensed at all times.

Although often referred to collectively as a 'registration', they are two different products.

Registration is achieved after entry compliance of a vehicle whether it be NZ new or an import. The registration form called an MR2A is printed, and from there you can register a vehicle for either six or 12 months and obtain new standard issue government number plates.

Licensing means paying a fee to use your vehicle on public roads. This is the label that is displayed on your windscreen.

### LAPSED LICENCE

If a vehicle licence hasn't been placed on hold and remains expired for more than 12 months, it's then dropped from the register and the plates effectively expire.

In order to get the vehicle back on the road, the original compliance/re-compliance inspection will need to take place again, and the process must start over in order to obtain new registration and number plates.



- WOF
- REPAIRS
- SERVICES
- MAINTENANCE
- ALL MAKES AND MODELS



A MEMBER OF:



# WORN TYRES AND WINTER ROADS



## WITH WINTER JUST AROUND THE CORNER HAVE YOU CHECKED YOUR TYRE TREAD?

Regularly check your tyres to make sure there is plenty of tread. The minimum legal depth is 1.5mm but the more tread you have the better the grip and the safer you'll be.

As it's the only part of the vehicle that grips the road, the depth of tread on your tyres is very important for the safety of your vehicle, especially when braking.

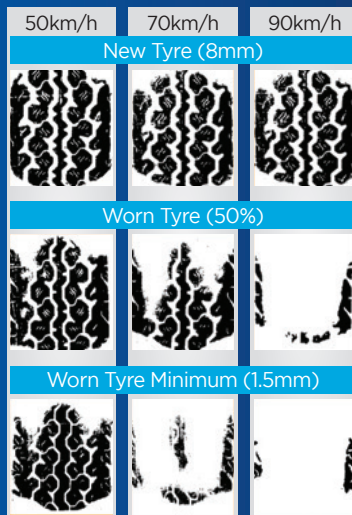
Checking your tyre tread depth is easy and only takes a few minutes. You can use a tyre tread depth checker/gauge yourself or go to your local Automotive Solutions member and get them to check it for you.

### REQUIREMENTS FOR TYRE TREAD DEPTH

Most tyres have moulded tread-depth indicators which are flush with the tyre tread when it has reached the minimum depth. The minimum legal tread depth is 1.5mm within all principal grooves that contain these moulded tread depth indicators. These must be at least 1.5mm around the whole circumference of the tyre.

### HOW MUCH OF YOUR TYRE IS IN CONTACT WITH THE ROAD IN 1MM OF WATER?

The image below shows how much a tyre touches a wet road at different speeds. The faster you go, the less effective your tyres will be if the tread depth isn't up to scratch.



## HAVE YOU JOINED THE E-BIKE CRAZE?

E-bikes are heavier than conventional bikes and require a high degree of maintenance. Below are some tips on maintenance:

- Keep tyres properly inflated. This is your number one priority before going out for a ride. Correct tyre pressure is critical to battery life, tyre life and puncture resistance. The correct pressure can be found on the tyre side wall and is often twice as high as your car tyres, 50 - 65psi is quite typical.
- Top off battery charge whenever you have the chance. And conserve power as you ride, because pedalling an e-bike with a dead battery is best left to superhero types.
- Check brakes regularly.
- Regularly clean, lube and inspect your chain. E-bikes rely on the chain as a vital link in the drivetrain system.

Find us on

[facebook.com/automotivesolutionsnz](https://facebook.com/automotivesolutionsnz)  
to learn lots of tips for car care  
and meet our friendly Automotive  
Solutions members.



## NZ IS JUST AS BEAUTIFUL IN WINTER AS IT IS IN SUMMER

CHECK OUT THESE ROAD TRIPS BELOW

### WELCOME TO WINTER - QUEENSTOWN

Queenstown's Welcome to Winter event is an action packed three days from 2 - 4 July with a range of events from live music to comedy shows, markets, on-mountain events, fireworks and more!

### TREK FRANZ JOSEF GLACIER

The Franz Josef Glacier is one of the South Island's most loved treasures. You will often see fresh snow on top of the ice during winter. If you're a keen explorer there is a range of treks which can take you to 750m up to the ice monster's face!

### HITTING THE SLOPES ON THE MOUNTAIN

New Zealand's slopes are some of the best. From the popular ski fields of Coronet Peak, surrounded by the Remarkables in the South, to Turoa Ski Field, the skiable volcano in the North, there is no shortage of mountains.

### ROTORUA GEOTHERMAL HOT SPRINGS

Kerosene Creek is just 35 minutes' drive from Rotorua. It is heated from a natural spring under the earth, which bubbles up into the water, creating warm waters in the creek. Best of all, there is no admission price!

### WHALE WATCHING IN KAIKOURA

The best time to catch the widest range of whales in Kaikoura is in winter as they migrate from the cool Antarctic waters, up to the warmer tropical oceans. On perfect days, you may see Humpback whales somersaulting on the horizon.

### ADRENALINE ACTIVITIES AT LAKE TEKAPO

Are you an adrenaline junkie? Not only does Lake Tekapo offer a wide range of the most popular activities, but it also offers activities you may have never heard of!

**TAUPO AUTOMOTIVE**  
REPAIRS AND SERVICING

**Taupo Automotive Repairs and Servicing**

16 Runanga Street, Taupo, 3377

Phone: 07 377 0654

Email: [taupoautomotive@gmail.com](mailto:taupoautomotive@gmail.com)

Web: [www.taupoautomotive.co.nz](http://www.taupoautomotive.co.nz)



A MEMBER OF:

**automotivesolutions**  
— nationwide

